



### Aim

To map concepts and classifications of functioning and disability present in the guidelines on tinnitus.

- Scoping review following the approach suggested by the Joanna Briggs Institute for study selection, data extraction and presentation, using the software Rayyan.
- Selected databases: MedLine/PUBMED, LILACS, Cochrane, Scopus, Web of Science and EMBASE.
- Search strategy: terms in English, Spanish and Portuguese, regarding “Tinnitus” and “Guidelines”.

### Methods

- Manual search on the websites of Audiology scientific societies, including at least one to represent each continent.
- Inclusion criteria: guidelines of the hearing health area that presented information about tinnitus with no restrictions of time and language. used for the study selection process.
- OFS registration: <https://doi.org/10.17605/OSF.IO/YZCJE>

### Results

Figure 1. Scoping review PRISMA 2020 flow diagram

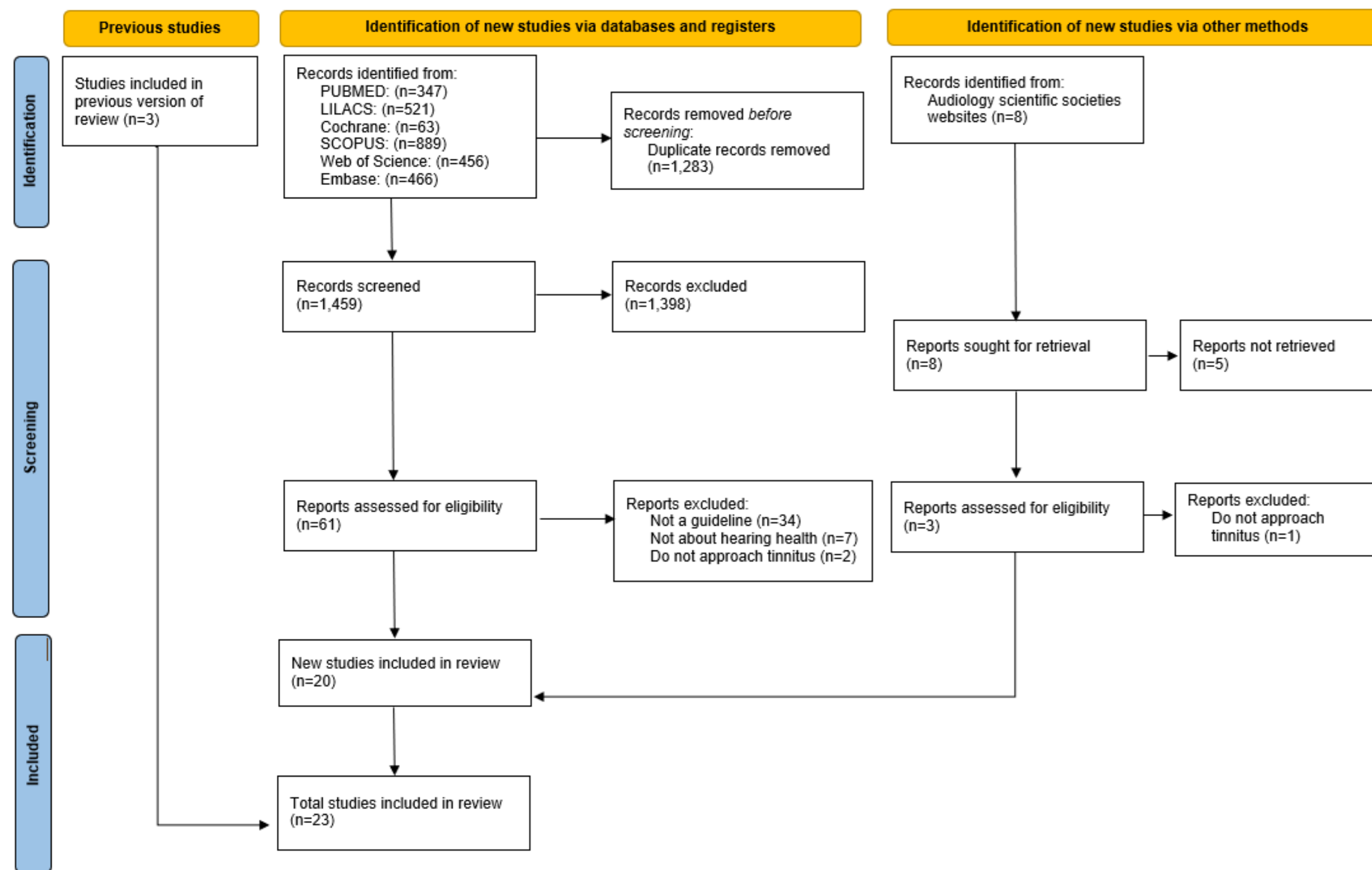


Figure 2. Map of the included guidelines by country

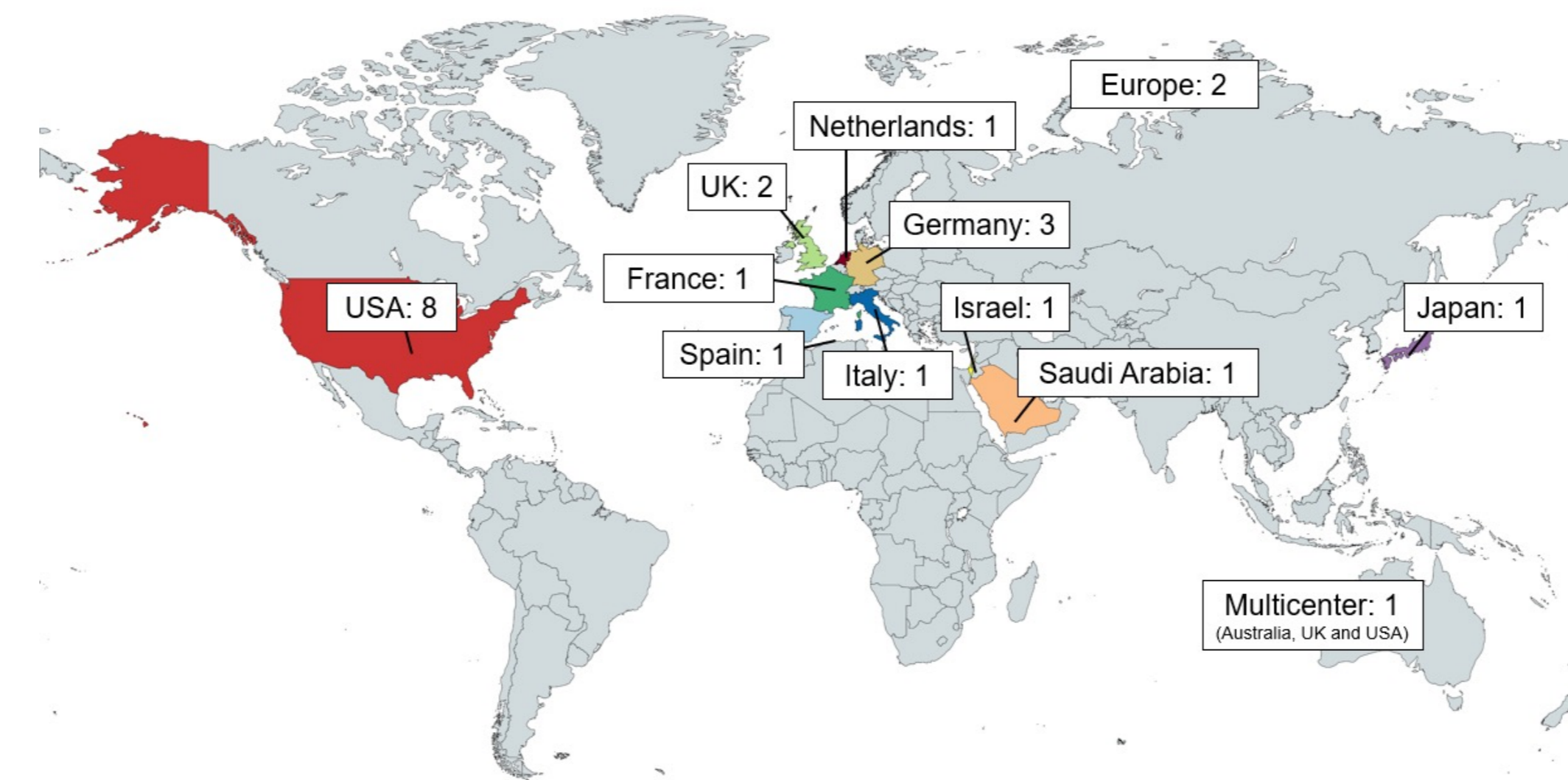


Table 1. Functioning aspects present in the guidelines (n=23)

Body Structures	Body Functions	Activities and Participation	Environmental Factors
23	23	11	7

Table 2. Theoretical model and sex and race/ethnicity considerations contained in the guidelines

Analysed aspects	Associations guidelines (n=12)	Researchers guidelines (n=11)	
Theoretical model	Biomedical	5	6
	Person-centered	5	3
	Mixed	1	2
	Biopsychosocial	1	0
Sex and race/ethnicity considerations	No	6	8
	Yes	2	1
	Only sex	4	2

Table 3. Target audience and targeted population of the guidelines

Analysed aspects	Associations guidelines (n=12)	Researchers guidelines (n=11)	
Target audience	Physicians	6	3
	Audiologists	1	3
	Health professionals	3	4
	Professionals and people with tinnitus	2	1
Targeted population	Children and adults	2	5
	Children, adults and elderly people	4	1
	Adults	3	2
	Adults and elderly people	3	3

### Conclusion

Guidelines are a valuable material for the clinical practice. However, in complex conditions, such as tinnitus, they must be elaborated considering also functioning aspects, sex, race/ethnicity and regionality to fundament and improve the care possibilities. This review provides evidence to a broader approach in tinnitus care and encourages the production of Latin-American and African guidelines.

### References

