

## Abstract

- Tuberculosis (TB) is a major health problem in Tunisia.
- Combined anti-tuberculosis is a reference treatment since 2009
- Not proved effectiveness.

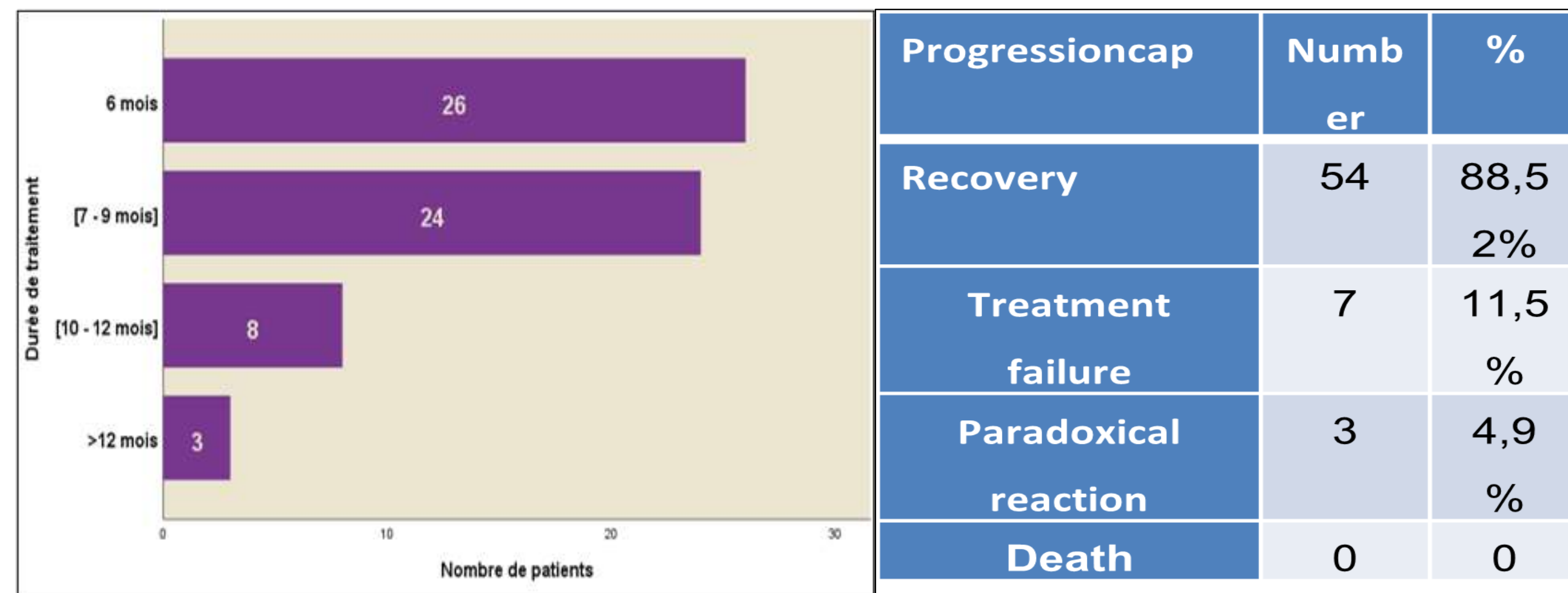


Figure: Distribution of patients according to the total duration of treatment

Progressioncap	Number	%
Recovery	54	88,5
Treatment failure	7	11,5
Paradoxical reaction	3	4,9
Death	0	0

Table: Results of combined antituberculosis treatment:

## Résultats

- Average age: 39 years old
- Female predominance (77.14%).
- Treatment average duration For patients who received the entire therapy in combined form (61 patients):8 months.
- Maximum duration:17 months.
- Switching to the dissociated form decided during treatment: 9patients.
- Good compliance:82.8% of patients.
- Adverse effects noted in 48.6% of patients including: hyperuricemia (20%), hepatotoxicity (18.5%), digestive intolerance (15.7%), skin manifestations (5.7%), polyarthralgia (2.8%) and renal impairment (1.4%).
- Therapeutic surgery indicated for paradoxical reactions in three cases, therapeutic failure in seven cases and recurrence in four cases. Cure declared in 88.5% of patients.
- Patients with therapeutic failure required surgical intervention and continuation of medical treatment. After initial clinical remission,
- Recurrence : four patients at intervals ranging from 10 months to seven years.

## Objectifs

- Aim: to study the results of cervical lymph nodes combined tuberculosis treatment

## Conclusion

Lymph node tuberculosis is responsible for significant morbidity and economic costs. Therefore, continuing the fight against tuberculosis remains a public health priority.

## Méthodes et Matériels

- A retrospective, descriptive, longitudinal study.
- Number;70 patients.
- The Otolaryngology department oh Mohamed Taher Maamouri Hospital.
- Period; 10 years (january 2013- december 2022).

## Références

1. World Health Organization. Global tuberculosis report 2022. Geneva; 2022.
2. TB profile Tunisia [Internet]. [cité 1 nov 2023]. Disponible sur: [https://worldhealthorg.shinyapps.io/tb\\_profiles/?\\_inputs\\_&entity\\_type=%22country%22&lan=%22EN%22&iso2=%22TN%22](https://worldhealthorg.shinyapps.io/tb_profiles/?_inputs_&entity_type=%22country%22&lan=%22EN%22&iso2=%22TN%22)